

**CEMENT LINED MILD STEEL PIPES, FITTINGS AND STRUCTURAL STEEL TUBES MANUFACTURER**



Pipe delivery to site



Steel Pipe for Structural Purpose

**OUR PRODUCTS**

1. Mild steel pipes for water conveyance in accordance to SPAN TS/British Standards and JKR Standards
2. Pipe size range from 100mm to 2000mm in Diameter
3. Mild Steel fittings and specials
4. Customized steel tube sizes to customer's requirement
5. Epoxy coated pipes



Spiral Pipe Forming Machine



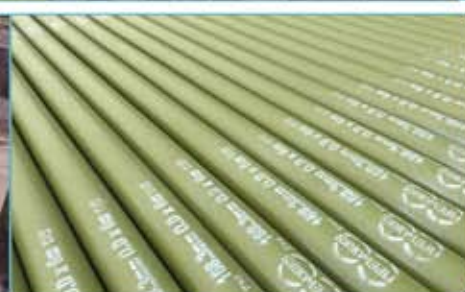
Pipe Unloading at Site

**OUR SERVICES**

1. In house non destructive/ destructive tests
2. Delivery of pipes to site
3. Temporary pipe storage for customers
4. Comprehensive QA/QC report in compliance to ISO 9001 standards



Bitumen coated fitting



Zinc Chromate Painted Pipes



Engagement Test